

SanDisk 

grūvi

User Guide

Copyright © 2005 SanDisk Corporation. All rights reserved. This document may not be copied, photocopied, reproduced, translated, or converted to any electronic or machine-readable form in whole or in part without prior written approval of SanDisk Corporation.

SanDisk and the SanDisk logo are trademarks of SanDisk Corporation, registered in the United States and other countries. TrustedFlash, the TrustedFlash logo, grūvi, the grūvi logo and MobileMate are trademarks of SanDisk Corporation. PacketVideo and the PacketVideo logo are trademarks of PacketVideo Corporation, registered in the United States and other countries. NormSoft, Pocket Tunes, and the Pocket Tunes logo are trademarks of NormSoft, Inc. The Yahoo! Music logo is a trademark of Yahoo! Inc. Rolling Stones is a trademark of Musidor. Other brand names mentioned herein are for identification purposes only and might be trademarks of their respective holder(s).

Contents

Welcome to the SanDisk grūvi User Guide!	4
Grūvi Music on a PC Running Windows XP	5
Installing grūvi Music on a PC	5
Playing grūvi Music on a PC	11
Getting Help with Y!ME Features	14
Copying grūvi Music onto a PC	14
Purchasing Preloaded grūvi Music thru the Y!ME Interface	16
Grūvi Music on a Pocket PC or Smartphone Running Windows CE	20
Installing grūvi Music on a Pocket PC or Smartphone	20
Playing grūvi Music on a Pocket PC or Smartphone	22
Getting Help with SanDisk Music Player Features	27
Copying grūvi Music onto a Pocket PC or Smartphone	28
Purchasing Preloaded grūvi Music thru the SanDisk Player Interface	29
Grūvi Music on a Mobile Handset Running Palm OS	32
Installing grūvi Music on a Palm OS Handset	32
Playing grūvi Music on a Palm OS Handset	36
Getting Help with Pocket Tunes Features	48

Welcome to the SanDisk grūvi User Guide!

The SanDisk grūvi music card contains the following components:

- The new Rolling Stones album *A Bigger Bang* available for unlimited play. Up to three copies of the album can be made for playback on grūvi –compatible devices.
- Previews of four additional Rolling Stones albums with the option to purchase songs
- An auto-launch music player that runs on supported playback devices
- The CD booklet for *A Bigger Bang* and some free Rolling Stones images

This guide explains how to install, play, and copy grūvi music in the following environments:

- On a PC running Windows XP
- On a Pocket PC or Smartphone running Windows CE
- On a Mobile Handset running Palm OS

In addition to step-by-step instructions, this guide provides answers to frequently asked questions.

For information on how to use specific features of supported devices, please refer to the user manual that comes with the device.

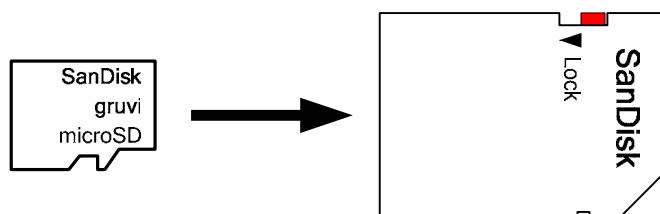
If unable to find an answer to a question, call SanDisk grūvi Support at 866-783-7811.

Grūvi Music on a PC Running Windows XP

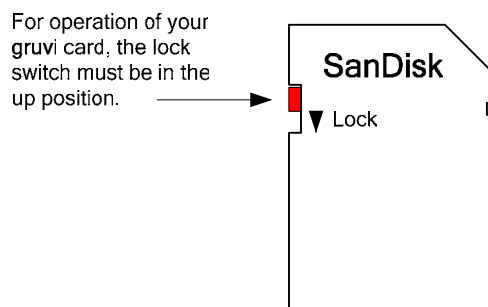
Installing grūvi Music on a PC

System Requirements:

- Microsoft Windows XP
 - Internet Explorer 6.0 or later
 - Windows Media Player 9.0 or later
 - Pentium III 300 MHz processor
 - 128 MB RAM
 - USB or PCMCIA SD Reader
 - Broadband internet connection for streaming and buying music
1. If the memory card slot on your PC or your USB adapter does not accept an SD card, then insert the SanDisk grūvi card into the accompanying SD adapter, as shown below:

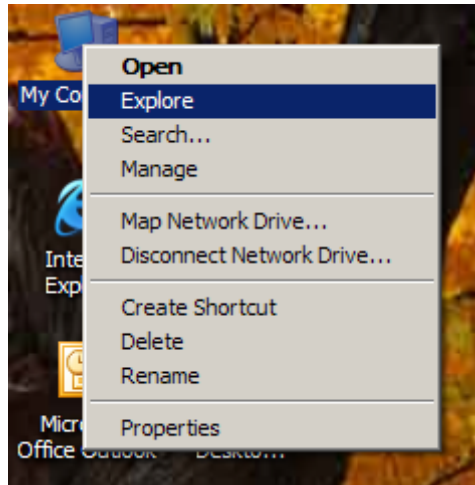


2. For operation of your grūvi Card, ensure that the Lock tab on the adapter is in the up position (Unlocked).

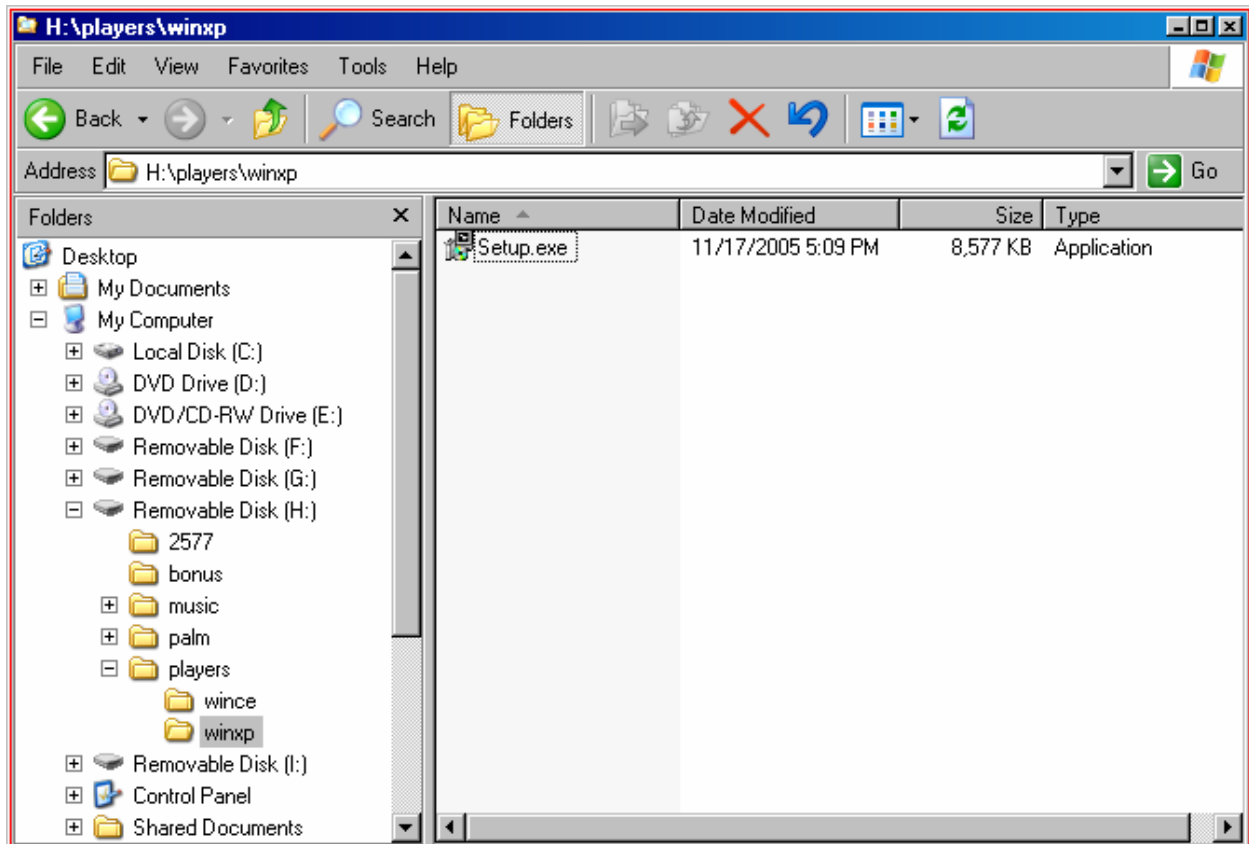


3. Insert the grūvi card or the SD adapter into a memory card slot or a USB hub, such as the SanDisk MobileMate™ SD+ 5-in-1 Reader.
4. If using a USB hub, plug the hub into any USB port on your PC.

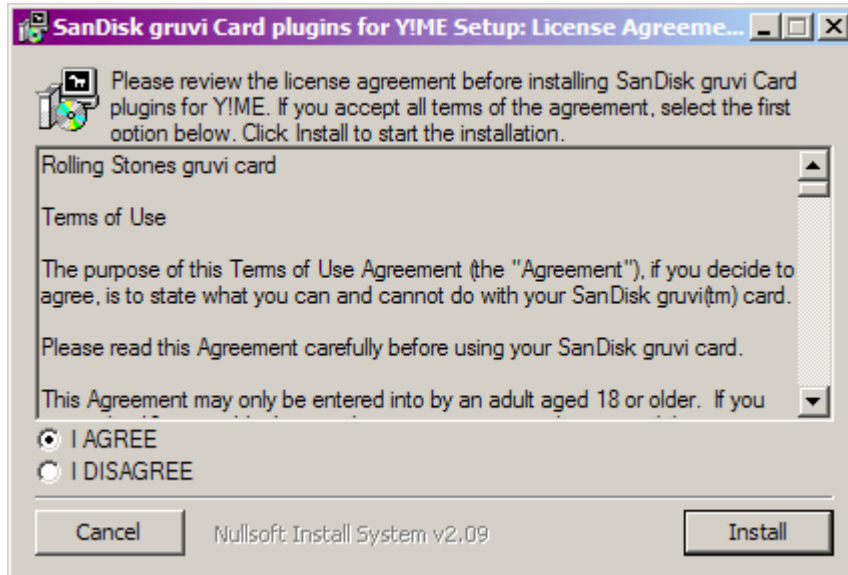
- From the Windows XP Desktop, right-click on My Computer and select **Explore**.



- Find the removable disk that is the grūvi card (Removable Disk (H:)) in this example) and select the **\players\winxp** directory.



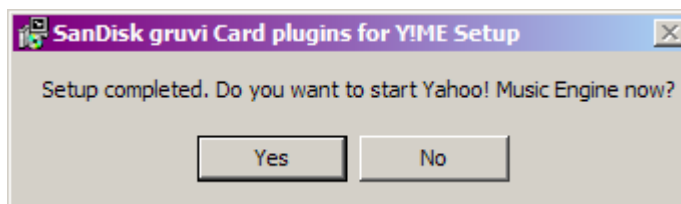
7. Double-click on the **Setup.exe** file and wait until the “SanDisk grūvi Card plugins for Y!ME” (Yahoo! Music Engine) license agreement displays.



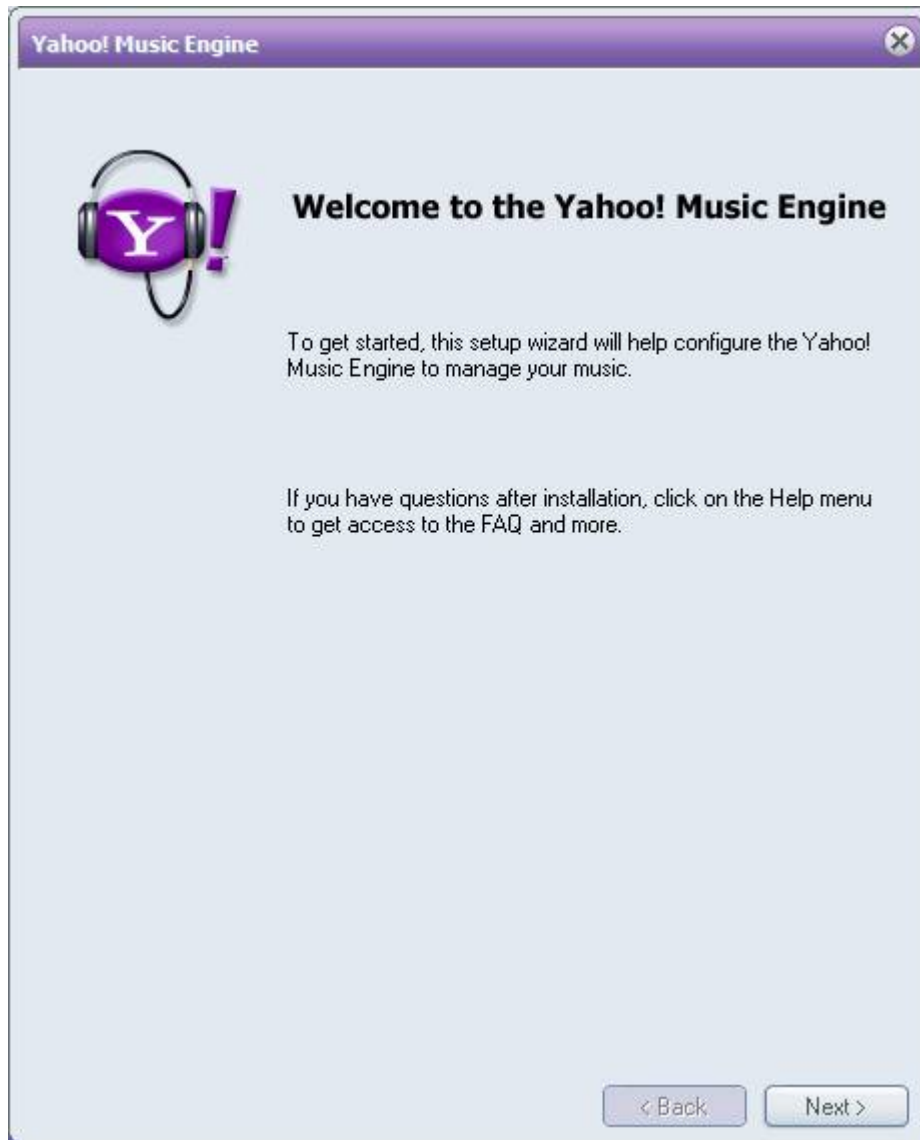
8. After reading the license agreement, select **I AGREE** and then click **Install** to continue the installation process, or select **Cancel** to discontinue the process.

If Y!ME is not already installed on your PC, the setup program installs Y!ME automatically when installing the grūvi card plugin for Y!ME.

9. When the installation completes, click Yes to start Y!ME.



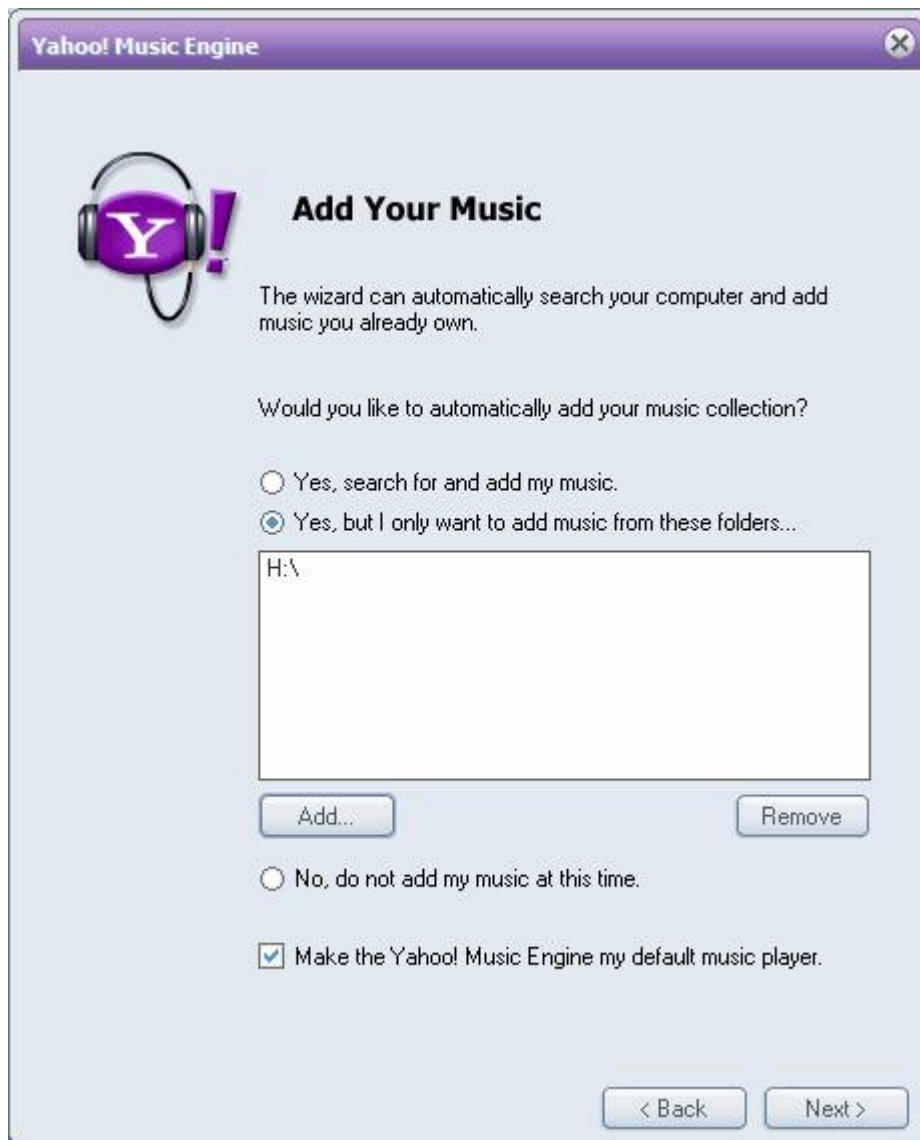
10. The first time you launch Y!ME, the following message displays:



Click **Next** to continue.

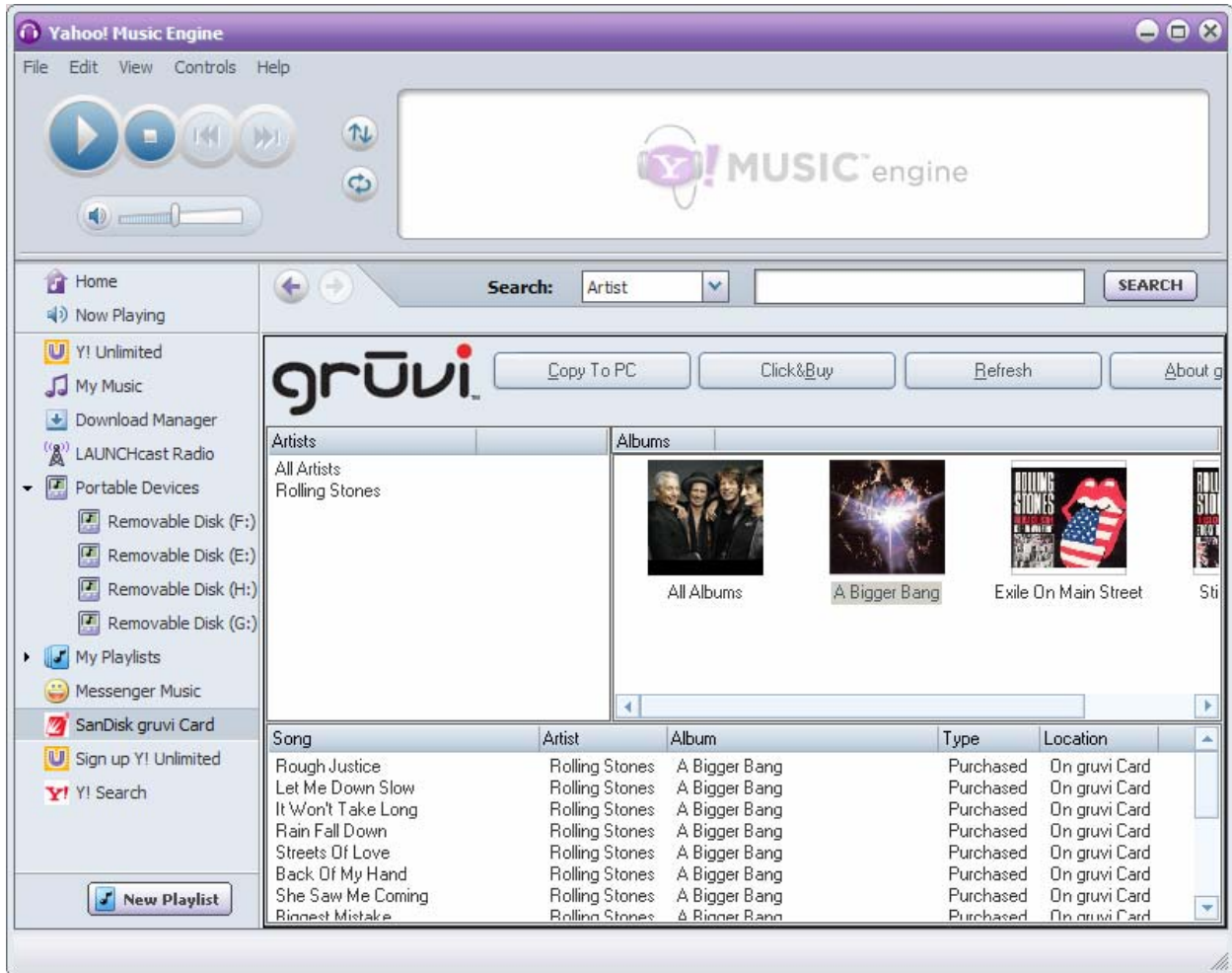
11. To add Yahoo! Protected content or other non-grūvi content, click either the **Yes, search for and add my music** option or the **Yes, but I only want to add music from these folders...** option and then click **Next**; otherwise, click **No, do not add my music at this time**.

Your grūvi music is managed by the SanDisk plug-in, not by Y!ME.



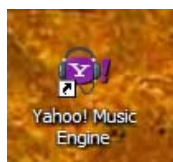
12. It takes a few seconds for Y!ME to display. Plugins are displayed in the left-hand column of the Y!ME window.

Select the **SanDisk grūvi card** plugin and **A Bigger Bang** in the Albums area to see songs you can play now on your PC.

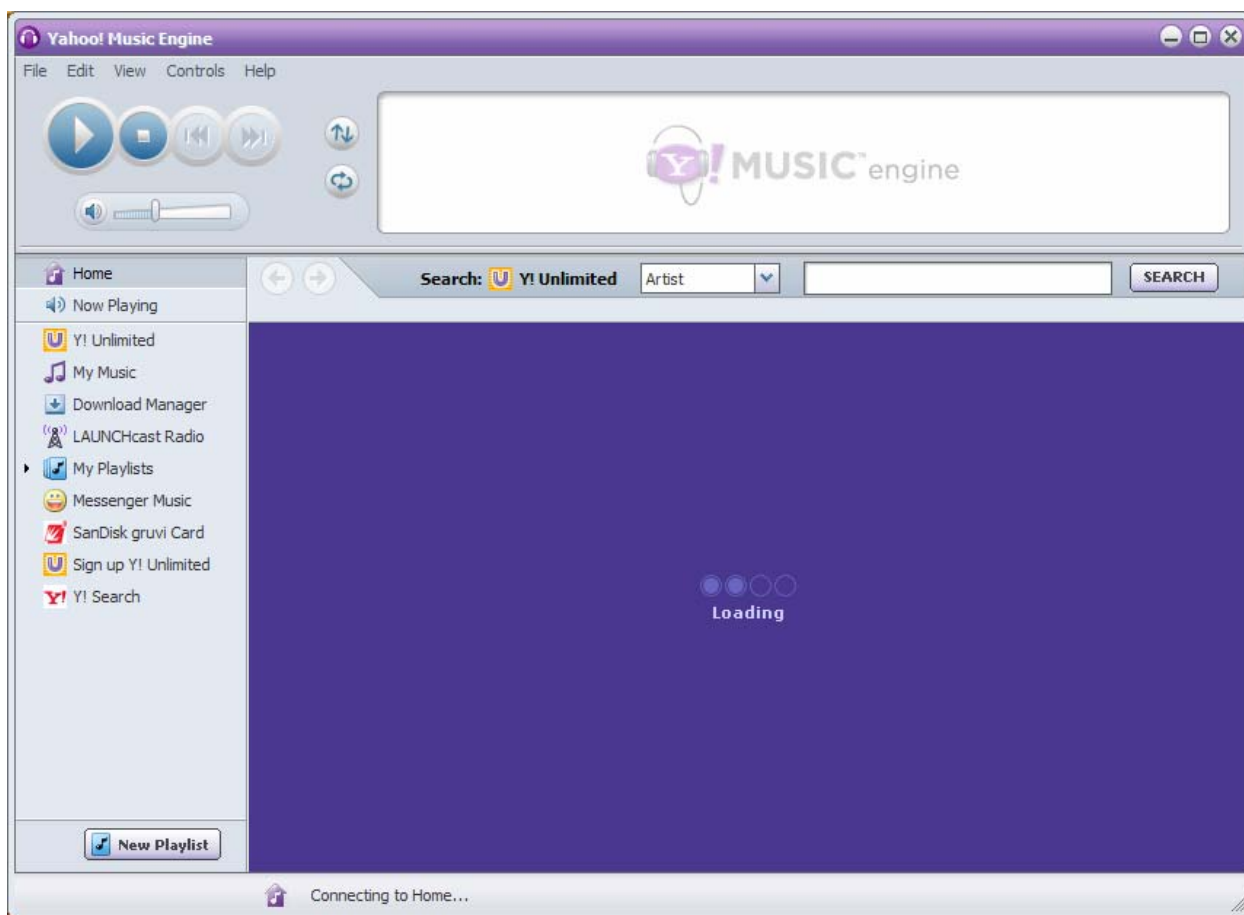


Playing grūvi Music on a PC

1. To play your grūvi music, launch Y!ME (if it is not already running) either by selecting the Y!ME icon in your PC's Quick Launch toolbar, or by double-clicking the Y!ME icon on the Desktop:

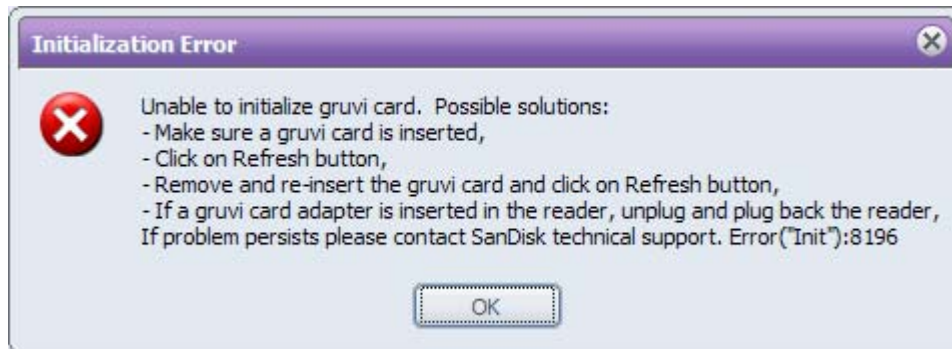


2. It takes a few seconds for Y!ME to display. Plugins are displayed in the left-hand column of the Y!ME window.



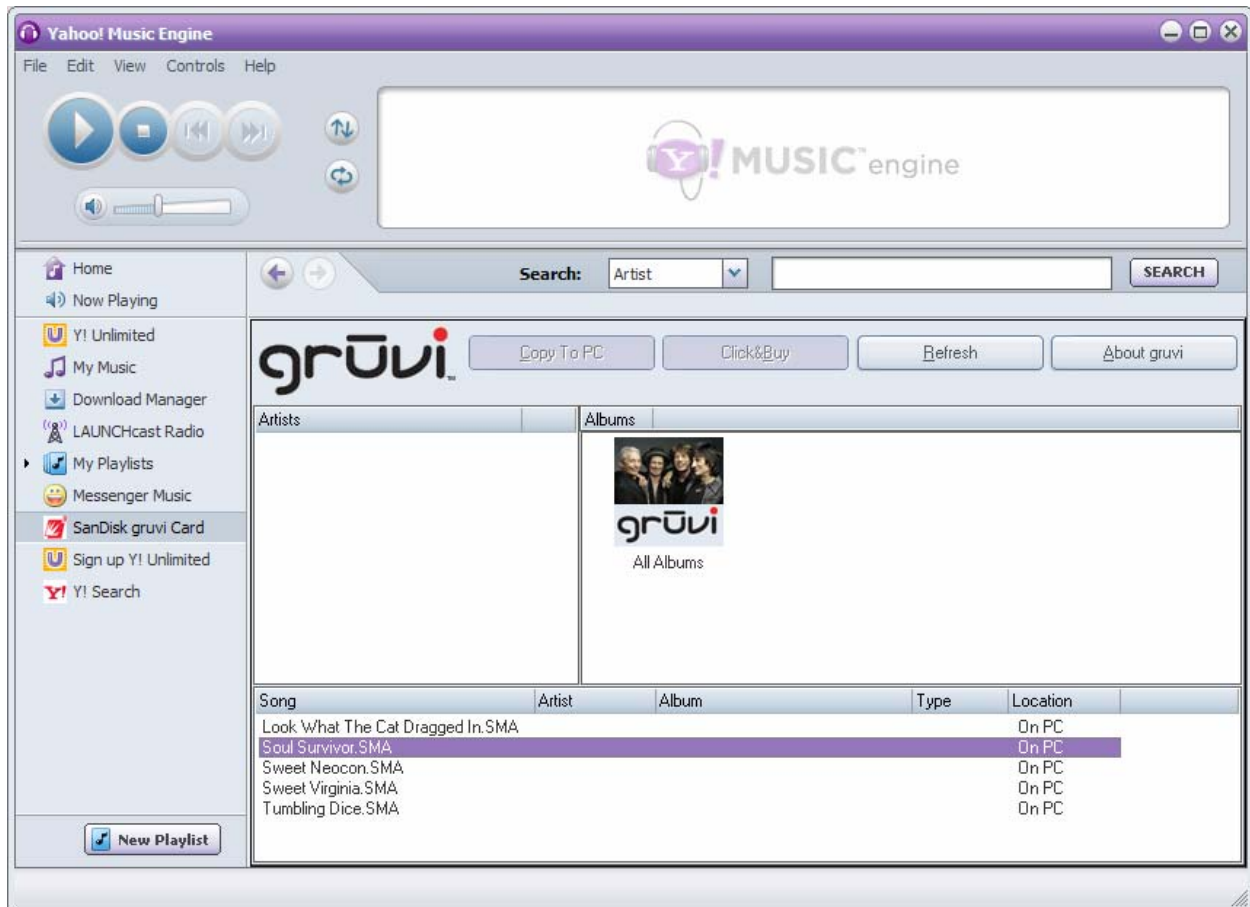
3. After Y!ME launches, select the **SanDisk grūvi Card** plugin and **A Bigger Bang** in the Albums area to see songs you can play on your PC.

If your grūvi card is not attached to the PC, you see the following message:



Make sure your grūvi card is connected, then click **OK**, or, if you want to play grūvi music that is already exported to your PC, just click **OK**.

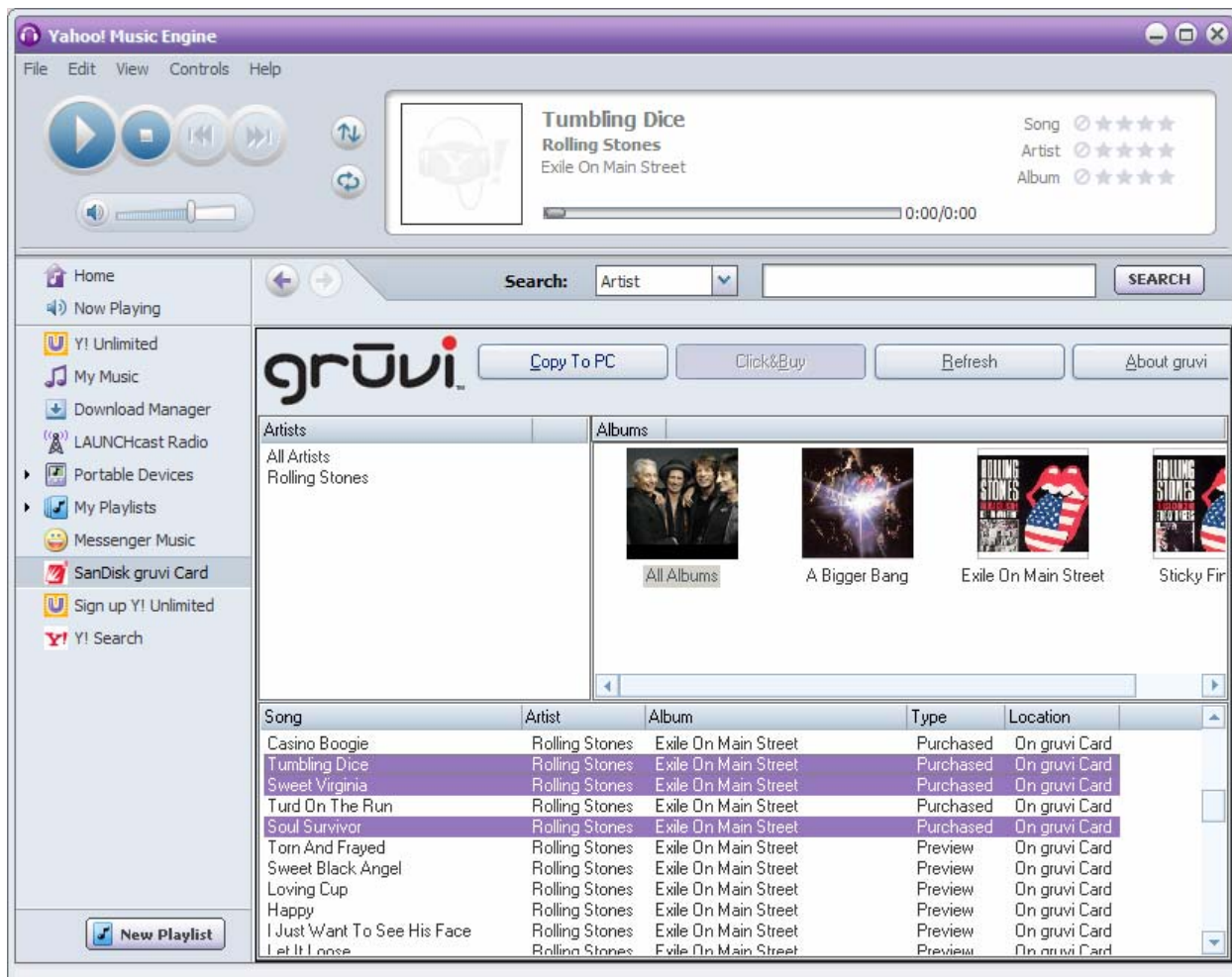
- Without the grūvi card connected to your PC, Y!ME displays only grūvi songs that have been exported to your PC's hard drive. (See the [Copying grūvi Music onto a PC](#) section for details about the export process or the **Copy To PC** button.)



With your grūvi card connected to your PC, Y!ME displays the grūvi card's contents.

To hear any song listed as **Purchased** (in the Type column) in its entirety, double-click the song. To play a preview of an unpurchased song, double-click any song listed as **Preview**.

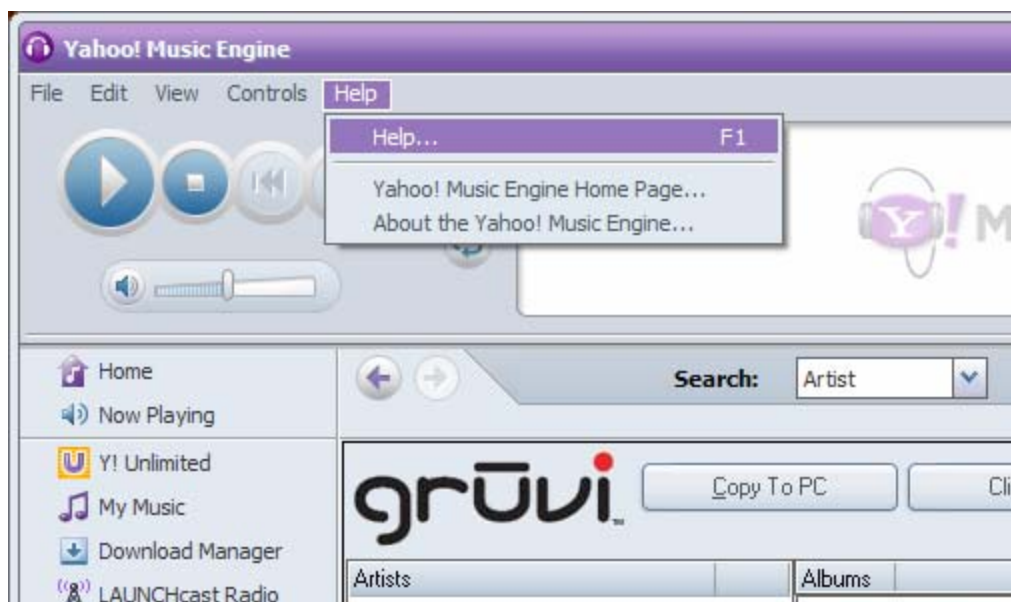
- To select two or more songs, press the Shift key or the Control key while selecting. To undo a selection, click the **Refresh** button above the albums.



- Use the control buttons in the upper left part of the Y!ME display to adjust volume, pause, stop, jump forward or backward, play songs in shuffle mode, or replay music automatically.
- Note that at the end of a preview, you have an opportunity to purchase the track. Press **OK** to continue the purchase process, or press **Cancel** to discontinue the process. (For more details about the purchase process or the **Click&Buy** button, see the [Purchasing Preloaded grūvi Music thru the Y!ME Interface](#) section.)

Getting Help with Y!ME Features

Hover over features (without clicking on them) to see what functions they perform. For more detailed help with Y!ME display features, click on the Help pull-down menu, or browse the Yahoo Music <http://help.yahoo.com/help/us/music/yme/playing/index.html> help site.



Copying grūvi Music onto a PC

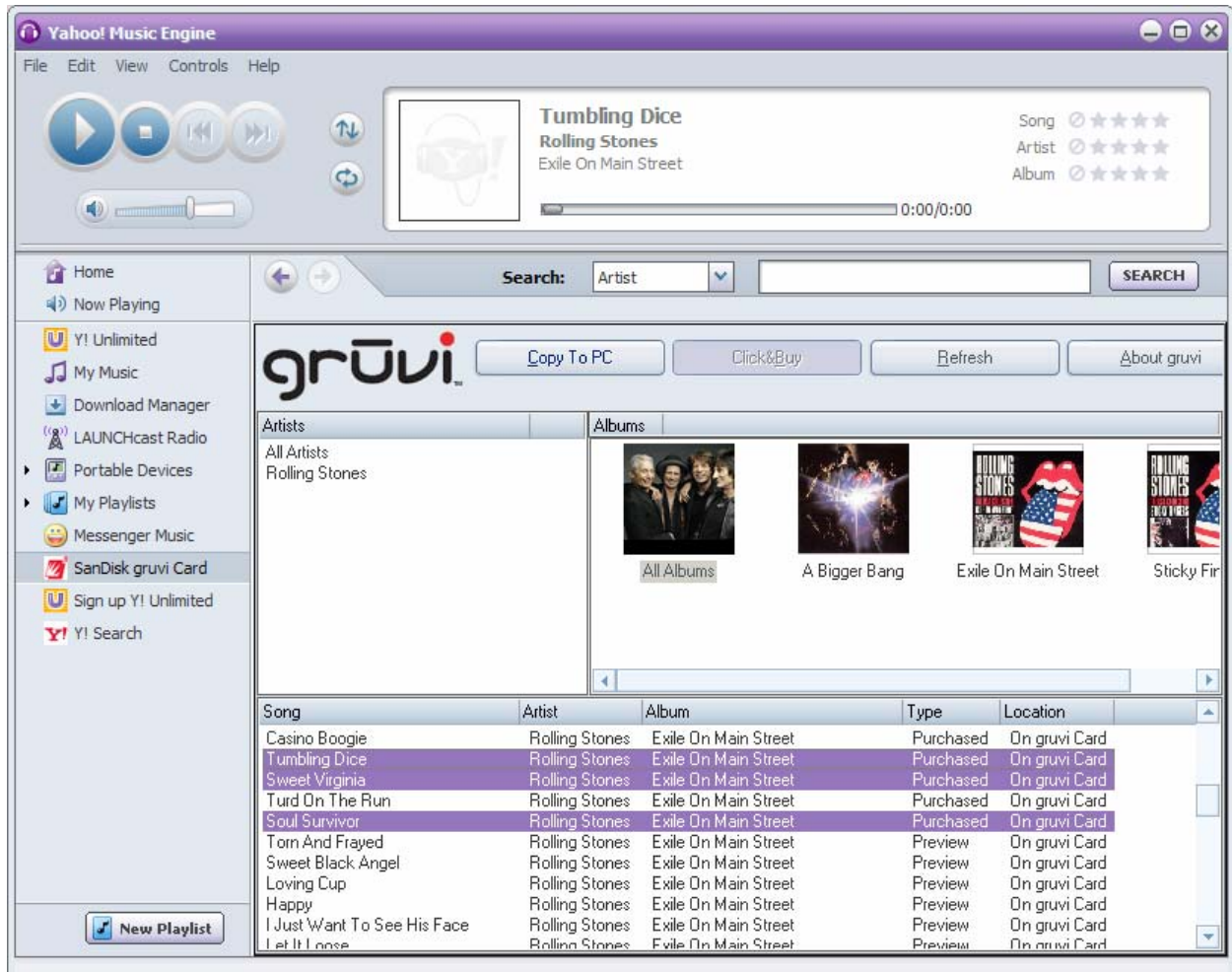
1. To select a song to copy to your computer's hard drive, launch Y!ME and click on any song listed as **Purchased** (in the Type column). You can make up to three copies of each purchased song.

NOTE: You can only copy songs to your computer's hard drive, and you can only play copied songs using the Y!ME SanDisk plugin.

To select two or more songs to copy, press the Shift key or the Control key while selecting songs. To undo a selection, click **Refresh**.

Note that if you select any songs listed as **Preview** (not purchased yet), the **Copy to PC** button is not presented as an option.

2. When you are finished choosing songs, and you are sure of your selection, click the **Copy to PC** button. (The process cannot be cancelled after you click **Copy to PC**.)



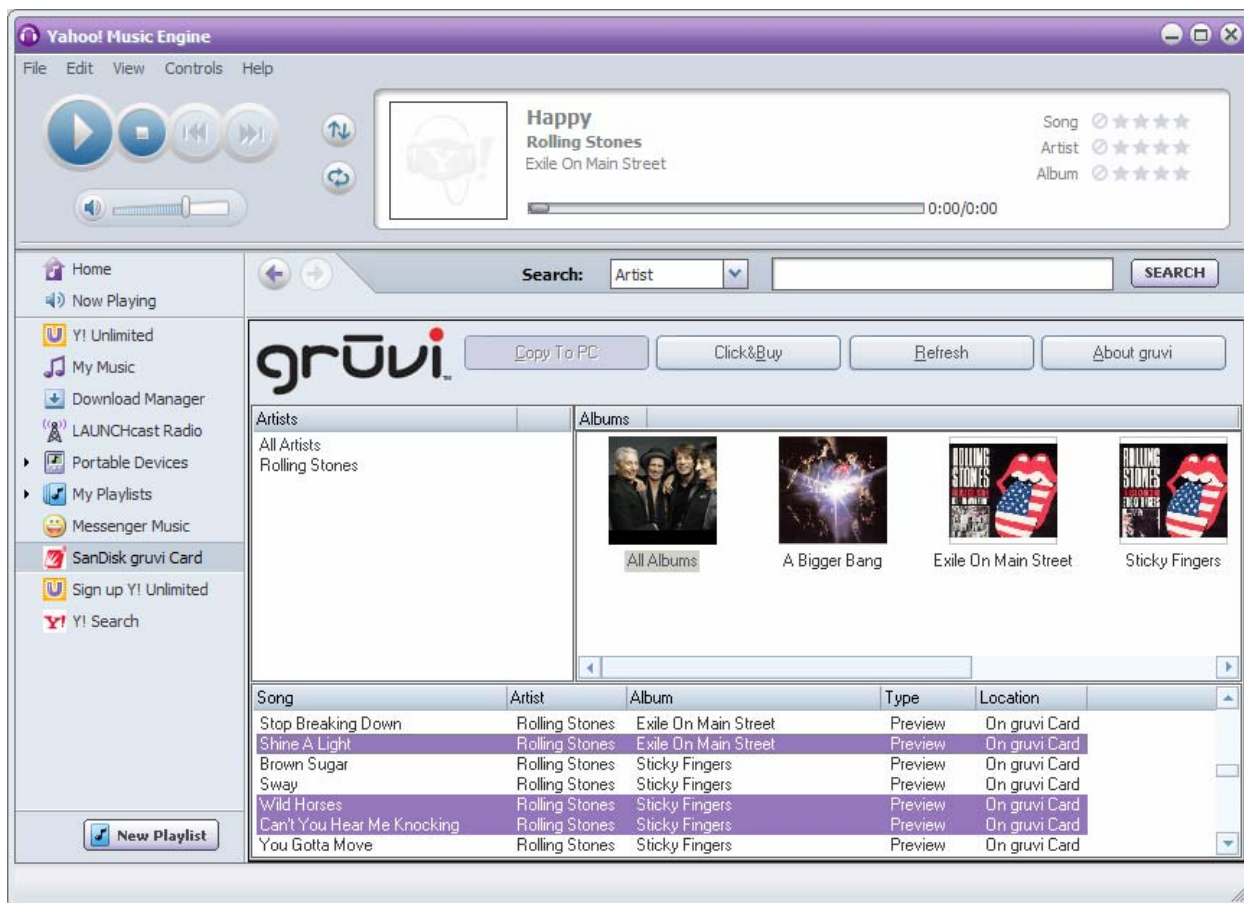
There is a brief pause while the first song in your highlighted selection is copied to the **\Documents and Settings\All Users\Documents\My Music\SanDisk grūvi music** directory on your hard drive.

- When the copy is complete, a message displays, indicating how many more times the song can be copied. Click **OK** to copy the next song in your selection.



Purchasing Preloaded grūvi Music thru the Y!ME Interface

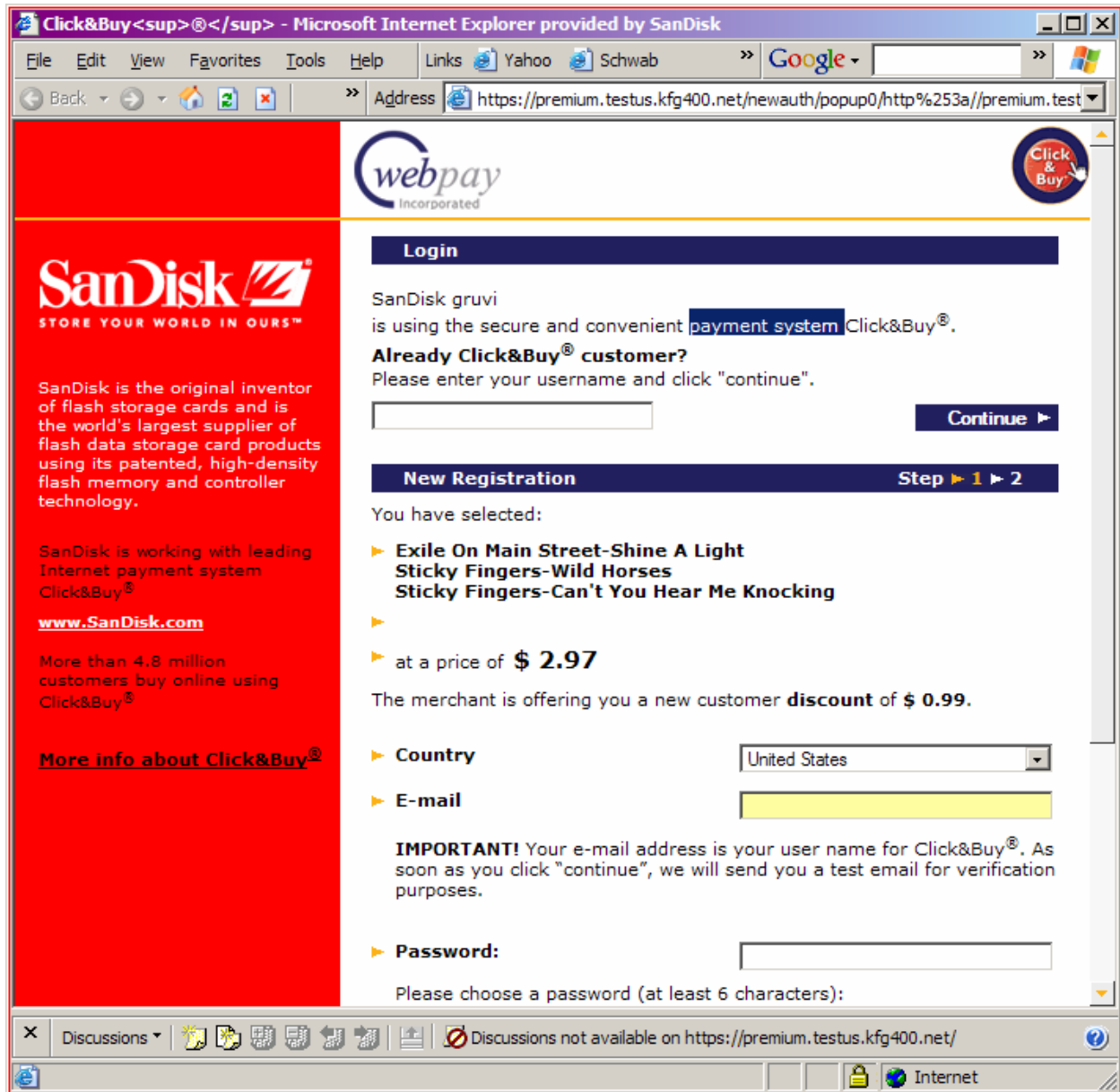
- To select a song to purchase, launch Y!ME and click on any song listed as **Preview**.
To select two or more songs to purchase, press the Shift key or the Control key while selecting songs. To undo a selection, just click **Refresh**.



Note that if you select any songs listed as **Purchased**, the **Click&Buy** button is not presented as an option.

- When you are finished selecting songs you want to buy, click on **Click&Buy**.

An internet browser launches and asks you to log into (or to register, if you are not yet registered with) the Click&Buy payment system.

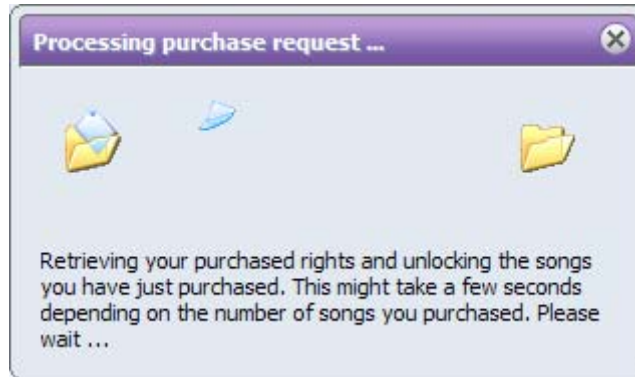


3. After registering with Click&Buy, enter your login name and click **Continue**.
4. Enter your password and click **Continue**.

5. The display asks you to either confirm or cancel your purchase. Click **Accept** to confirm the purchase, or click **Back** to cancel it.



- When you click **Accept**, after a brief pause, if the display asks you to select Open or Save, select **Open** to complete the purchase. (**NOTE:** If you select **Save**, then you must browse to the location where the trigger.nt1 file has been saved and open it to complete the purchase.) The following message is displayed:



The list of songs in the Y!ME display is updated with your newly purchased titles.

Song	Artist	Album	Type	Location
Stop Breaking Down	Rolling Stones	Exile On Main Street	Preview	On grūvi Card
Shine A Light	Rolling Stones	Exile On Main Street	Purchased	On grūvi Card
Brown Sugar	Rolling Stones	Sticky Fingers	Preview	On grūvi Card
Sway	Rolling Stones	Sticky Fingers	Preview	On grūvi Card
Wild Horses	Rolling Stones	Sticky Fingers	Purchased	On grūvi Card
Can't You Hear Me Knocking	Rolling Stones	Sticky Fingers	Purchased	On grūvi Card
You Gotta Move	Rolling Stones	Sticky Fingers	Preview	On grūvi Card

Grūvi Music on a Pocket PC or Smartphone Running Windows CE

The SanDisk Music Player organizes your music library into albums and allows you to preview more music available for purchase.

You can play digital music directly from your SanDisk grūvi card or your own Windows Media content from your Windows Smartphone or Pocket PC device.

Installing grūvi Music on a Pocket PC or Smartphone

System Requirements:

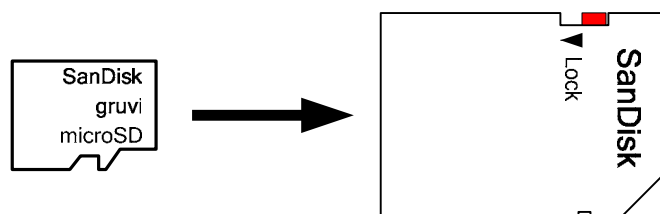
- Microsoft Windows CE
- GPRS or higher speed service for buying music

Supported Devices:

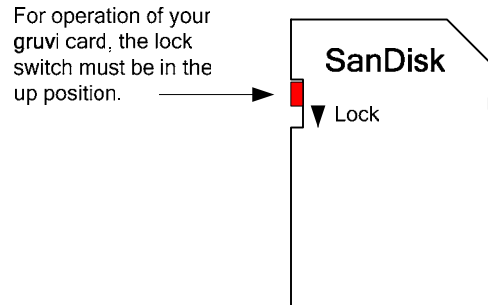
- Full compatibility list available at: www.sandisk.com/gruvi/rollingstones

For automatic installation of the SanDisk Player on your device, do the following:

1. Turn on your Pocket PC or Smartphone.
2. If the memory card slot on your device does not accept an SD card, then insert the SanDisk grūvi card in the accompanying SD adapter, as shown below:



3. For operation of your grūvi Card, ensure that the Lock tab on the adapter is in the up position (Unlocked).



4. Insert the SanDisk grūvi card or SD adapter into your Pocket PC or Smartphone.
5. If the installer does not start, see the steps below to manually install the SanDisk Player:
 1. Open a **File Manager** window.
 2. On the Storage Card drive, browse the \Players\WinCE directory and run the **setup.exe** file.
6. When the License Agreement for the SanDisk Music Player is displayed, select **I Agree** to continue the installation, or select **Cancel** to cancel the process.
7. When asked to choose a location for the SanDisk Player software, select **Phone**. (Do not select **Storage Card**.)
8. When installation is complete, a message displays indicating that the program was successfully installed on your device. Click **OK**.

Playing grūvi Music on a Pocket PC or Smartphone

Start SanDisk Music Player



When you insert your SanDisk grūvi card into the storage card slot on your Pocket PC or Smartphone, the SanDisk Music Player should start automatically.

You can also start the player by selecting the **Start** menu and scrolling down to locate the **SanDisk Player** program.



General Navigation

Navigating SanDisk Player is similar for both Smartphone and Pocket PC devices. Pocket PC devices can also use the stylus to make selections. The buttons along the bottom of the display are referred to as *softkeys*. Smartphone devices usually have a hardware button directly below the softkeys that is used to select a softkey. Pocket PC devices might not have a hardware button that is associated with the softkeys displayed on the bottom of the device. If using a Pocket PC, use the stylus to click the button on the bottom of the display.

Most devices have a hardware *Back* key that can be used to return to the previous view. You can use either the hardware *Back* key or the *Back* softkey to go back one screen. Pressing your phone's *Back* key or the *Back* softkey from the first screen exits the application.

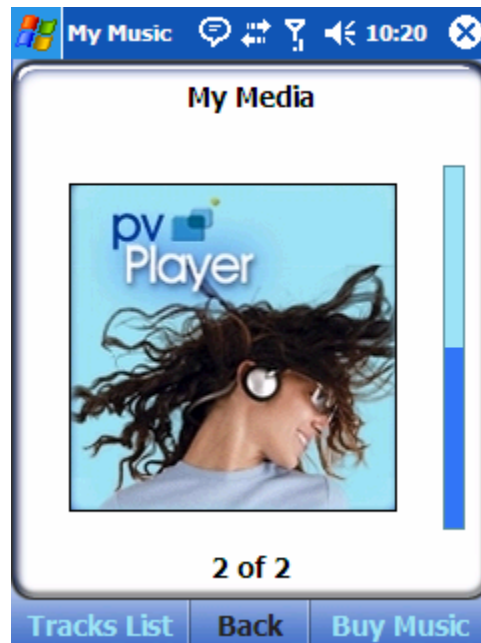
My Music

The *My Music* softkey displays a list of the songs you purchased from your SanDisk grūvi card, as well as other Windows Media songs that were found on your device.



A scrollbar appears on the right side, along with a count of the albums in this category, to let you know that more albums are available for view. Scroll down using the down scroll key to see more albums.

On a Pocket PC, move to the next album by dragging the stylus on the scrollbar to the right.

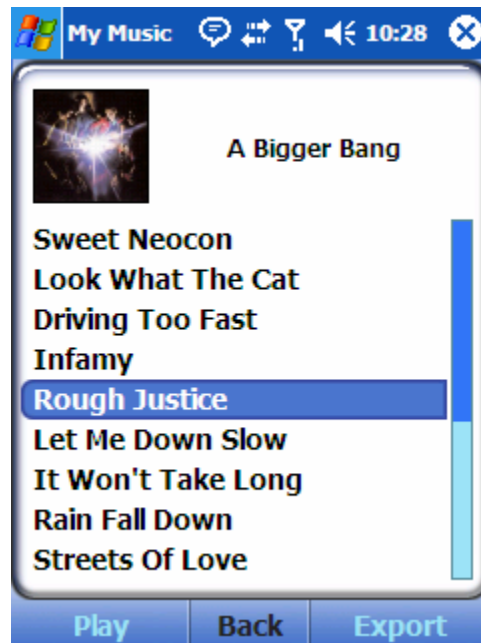


The songs purchased from your SanDisk grūvi card are organized by album. All other Windows Media music or exported SanDisk grūvi music is displayed alphabetically under the ***My Media*** category.

View the Tracks List

Press the center Select button on your device to view the Tracks List. You can also select the softkey on the left to view the Tracks List.

On a Pocket PC, use the stylus to select the Tracks List by tapping on the album graphic.



Scroll up and down the Tracks List by using the up and down scroll keys. The scroll bar on the right indicates your current position in the list.

On a Pocket PC, use the stylus to scroll the Tracks List by dragging the scroll bar on the right.

Play a Song

Begin playback by highlighting a track and pressing the center Select key, or by selecting the *Play* softkey.

On a Pocket PC, begin playback using the stylus by double tapping the highlighted track.

Playback Controls

The playback controls in the playback view allow you to pause and resume playback, go forward or back in the song, skip to the next or previous track, and adjust the volume level.



Pause or Resume Playback

Press the softkey on the left to toggle between pause and play. The SanDisk Music Player plays all of the songs in the selected album continuously in a loop.

Go Forward or Back in a Song

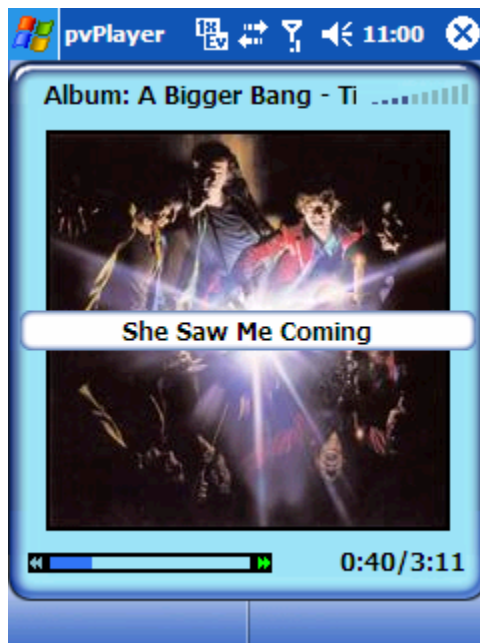
Press and hold down the right scroll key to move forward in a song. The time and progress indicator advances while you hold down the key. Release the right scroll key to begin playback starting at the new position. Press and hold the left softkey to go back in a song.

On a Pocket PC, use the stylus and tap in the progress indicator to jump to the playback position.

Skip to the Next or Previous Track

Press and release the right or left scroll keys to display a popup window with the title of the next or previous track in the album tracks list. Continue to press and release the right or left scroll keys to advance through the list. Playback continues while you are making your next selection. Your song selection begins playing shortly after you stop advancing through the list.

On a Pocket PC, use the stylus to tap on the right and left arrow keys on either side of the progress indicator.



Adjust the Volume

Press the up and down scroll keys to adjust the volume level. You can also use the system volume control buttons on your device to set the volume.

On a Pocket PC, use the stylus to tap on the volume indicator.

Getting Help with SanDisk Music Player Features

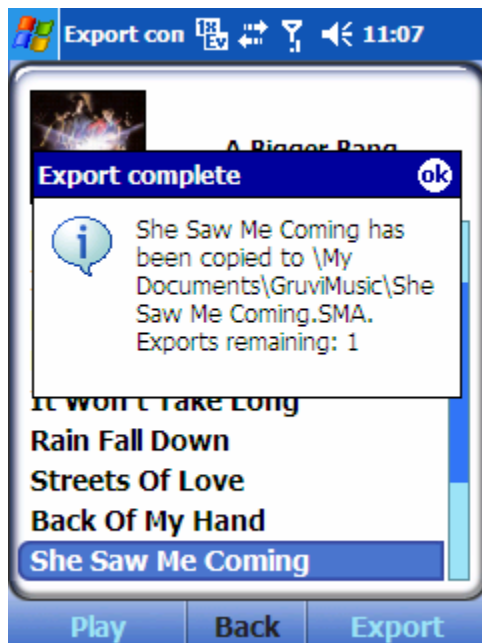
For help with any SanDisk Player features, call SanDisk Customer Service at 866-SANDISK (866-726-3475).

Copying grūvi Music onto a Pocket PC or Smartphone

Music tracks can be exported from your grūvi card up to three (3) times. To begin the process of exporting music purchased from your grūvi card to your Smartphone or Pocket PC, press the *Export* softkey from the Tracks List.



Once the export process is complete, a confirmation dialog indicates where your song was copied and how many exports remain. This is the \My Documents\GruviMusic directory on your phone.



Purchasing Preloaded grūvi Music thru the SanDisk Player Interface

Select the *Buy Music* softkey to view tracks from other great albums on your grūvi card.



Navigating the albums list and entering the Tracks List is the same as for My Music.

Preview a Track

To preview a portion of a track before deciding to purchase it, select the left softkey.

On a Pocket PC, use the stylus to double tap the highlighted track item.

The Playback Controls work the same when playing a track for preview.

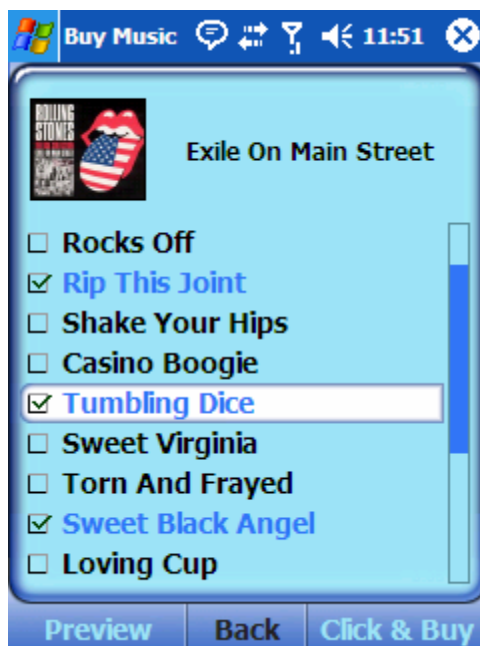
At the end of a preview, you have an opportunity to purchase the track. Press **OK** to view the price, or **Cancel** to discontinue the purchase process.



Select Multiple Songs for Purchase

To purchase one or more items at a time, select an item for purchase, highlight the track list item, and then press the center Select key.

On a Pocket PC, use the stylus to tap the check box next to the track list item(s).



Press the *Click & Buy* softkey to launch a web browser that displays the price of your selected items and enables you to purchase the tracks. Your device must have WAP (Wireless Application Protocol) access to proceed.

To set up WAP on a Pocket PC, you need the details of a WAP access provider, which is most commonly your mobile phone company, but could also be your Internet Service Provider. WAP access providers make use of a “gateway”, so you need their gateway address and a username and password to connect.

Scroll down the display to type in your username and password, or follow the link to register with the Click & Buy payment system, if you are not already registered.

After you log into Click & Buy, a list of the tracks you selected are displayed, and you can either click on **Accept** to confirm your purchase or click on **Logout** to cancel the transaction.

After you click **Accept**, it might take several minutes before you see a display indicating that the transaction was successful, depending on how many tracks were purchased.

When the purchase is complete, click **OK** to return to the SanDisk Player display.

Note that any tracks you bought are automatically moved over to the *My Music* list.

Grūvi Music on a Mobile Handset Running Palm OS

The following features are included with the grūvi custom version of Pocket Tunes:

- Grūvi playback
- WMA support (excluding Janus DRM used by online stores)
- Standard playback functions, such as Play, Pause, Stop, Skip Forward/Back, Scan Forward/Back
- Background playback - you can open other applications and Pocket Tunes continues to play
- Graphic Equalizer (or Bass Boost) support (This feature is not supported on the Treo 600.)

These features are **not** included with this version of Pocket Tunes:

- MP3 playback
- WAV playback
- Ogg playback
- Windows Media Player integration
- WMA playback for Janus DRM protected files – for example, files from online stores like Napster, Rhapsody, and Yahoo Music
- Bookmarks/Auto-Bookmarks
- Internet Audio
- Crossfade
- Gapless playback

Installing grūvi Music on a Palm OS Handset

System Requirements:

- Palm OS 5.2 or later (or Tungsten T)
- 820KB memory available on device for Pocket Tunes music player

Recommended:

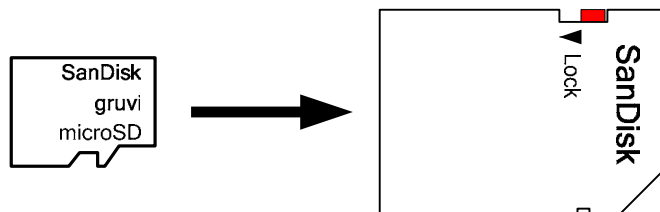
- 1,100KB memory on device (for skins and plugins)

Supported Devices:

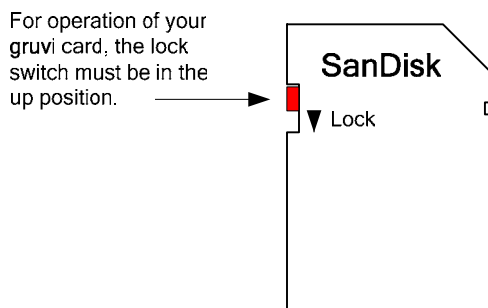
- Full compatibility list available at: www.sandisk.com/gruvi/rollingstones

For automatic installation of the Pocket Tunes music player, do the following:

1. Confirm that your device is a supported device.
2. Turn on your device and go to the “Applications” window.
3. Insert the SanDisk gruvi card into the accompanying SD adapter, as shown below:



4. For operation of your gruvi Card, ensure that the Lock tab on the adapter is in the up position (Unlocked).



5. Insert the SD adapter into your device.
6. If the installer does not start, see the steps below to manually install Pocket Tunes.

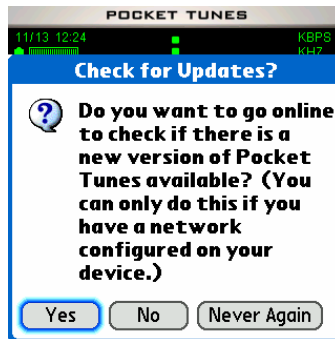
Otherwise, when a message similar to the following displays on your screen, select **Yes** to begin the installation, or click **No** to cancel the installation process.



7. After you select **Yes**, the message “Installing Pocket Tunes...Please Wait” displays. **DO NOT remove the grūvi card during this time.**

Upon completion, the message “Pocket Tunes” and the version number displays, then the message “Searching for music” displays in a new window.

8. If you have an Internet connection on your device, when the following message displays, click **Yes** to have Pocket Tunes check for an updated version:



Note: This does NOT work if your device cannot connect to the internet.

Note: Some versions of Pocket Tunes may not be compatible with your grūvi card. Check with SanDisk grūvi Support at 866-783-7811 before installing any Pocket Tunes update.

If you do not want to (or cannot) connect to the internet, select **No**.

9. A screen displays with the first title on the album. Press the Play button (circle with the triangle in it) to start the song.



To manually install Pocket Tunes, do the following:

1. Confirm that your device is a supported device.
2. Go to the “Applications” window on your device and insert the SD adapter into the device.
3. In the pull-down menu at the top of the screen, select the grūvi card.
4. Click on the icon labeled **SanDiskInstaller**. Two scenarios are possible at this point:
 - An older version or no version of Pocket Tunes is installed.
 - A newer version of Pocket Tunes is installed.

If you have an older version or no version of Pocket Tunes installed, proceed as follows:

1. When a message similar to the following displays on your screen, select **Yes** to begin the installation. Otherwise, click **No** to cancel the installation process.



2. Go to Step 7 above in the automatic installation procedure.

If you have a newer version of Pocket Tunes, after you click on the icon labeled **SanDiskInstaller**, nothing occurs, and you must proceed as follows to install the grūvi version:

WARNING: *Deleting a newer version of Pocket Tunes results in the loss of any bug fixes and feature additions that are part of the newer version.*

1. Go to the “Applications” window on your device, select **Menu**, then select **Delete**.
2. Select **pTunes**, then press **Delete**.
3. After the Pocket Tunes program is deleted, follow the instructions above to install the grūvi version of Pocket Tunes automatically.
4. If the installer does not run, follow the steps for a manual installation.
5. If you have a Registration Code for version 3, you must re-enter the code.

Playing grūvi Music on a Palm OS Handset

When you start Pocket Tunes, the player screen displays. Depending on which skin you have installed, this screen looks different. All of the screen shots in this guide are from the default skin (**HiFiSkin.pdb**). The HiFi skin was created by Lance Wehrung (www.palmfocus.com).

Note that if you have a device that supports landscape and portrait large screen views, the HiFi skin resizes to fit the screen, and the layout is slightly different than what is shown here.












To personalize the look of Pocket Tunes, with a variety of skins to choose from, you must first register at www.pocket-tunes.com/sandisk/ to receive a bonus code, then visit the <http://www.pocket-tunes.com/skins/index.html> website.





To access Pocket Tunes preferences and options, display the menu. To display the menu, press the **Menu** key on your device's keyboard, or tap the Menu icon in the graffiti area of your device. Many of the menu items have hot keys, which are listed to the right of each menu item. To access these functions quickly, just press the corresponding key (you do not need to display the menu first).



Below are descriptions of the various parts of the HiFi skin.

	<p>Title Bar: Tap on this to display the menu.</p>
	<p>Battery Meter</p>
	<p>Volume</p>
	<p>Current Position in the song. Tap on this to switch from count-up to count-down.</p>
	<p>Stereo/Mono Indicator</p>
	<p>kbps: The kilobits/second indicator shows the compression level of the sound.</p>
	<p>KHz: The kiloHertz indicator shows the sampling rate.</p>
	<p>Song Length in minutes:seconds.</p>
	<p>Song Title: Tap on the title to toggle between showing the playlist and showing song info.</p>
	<p>Playlist Panel: Shows the playlist or information about the current song. To change what this displays, tap on the song title or change the option under General Preferences. To make this area bigger, press the open/close panel button.</p>
	<p>Play: Tap either of these buttons to play music.</p>
	<p>Pause: Tap either of these buttons to pause the music. Tap again to resume.</p>

	<p>Stop: Tap either of these buttons to stop playing and go back to the beginning of the song.</p>
	<p>Previous Track: Tap either of these buttons to go back to the beginning of the current song. Tap again to go to the previous song in the playlist. Hold this button down to rewind.</p>
	<p>Next Track: Tap either of these buttons to go to the next song in the playlist. Hold this button down to fast forward.</p>
	<p>Position Slider: Tap and drag to seek within the current song.</p>
	<p>Volume Slider: Tap and drag to change the volume.</p>
	<p>Balance Slider: Tap and drag to change the balance left or right.</p>
	<p>Open/Close Panel: Tap this button to open and close the control panel.</p>
	<p>Choose Song: Tap this button to choose a song to play.</p>
	<p>Choose Playlist: Tap this button to choose a playlist to play.</p>
	<p>Repeat: When turned on, the playlist continues to play over and over again. A small icon appears below the current position timer when repeat is enabled.</p>
	<p>Shuffle: When turned on, songs are played in random order. A small icon appears below the current position timer when shuffle is enabled.</p>

	<p>Turn off screen: Tap this button to turn off the screen on supported devices. This button is available only when a song is playing and you have the Turn off screen while playing preference item selected. It is not available on some handhelds on which this capability is unsupported.</p>
	<p>(NOT AVAILABLE IN THE grūvi ONLY VERSION)</p> <p>Crossfade: Tap this to enable crossfade. Tap and hold to display the Crossfade Preferences. A small icon appears below the current position timer when crossfade is enabled.</p>
	<p>Skin Preferences: Tap this to change the skin preferences (e.g. choose fonts). Tap and hold to choose a new skin. The first custom font is for the song title, and the second custom font is for the playlist panel.</p>
	<p>Equalizer: Tap this to toggle between the equalizer, bass boost, and no equalization. Tap and hold to view the equalizer preferences.</p>

Choosing Songs

When choosing songs to add to a play list or selecting songs to play immediately, you see the Choose Songs screen:



At the top-right of the screen is a drop-down containing a list of available memory cards. The screen also contains an entry called **Palm**, which is for selecting audio files in main memory. When you first select a memory card, Pocket Tunes looks for the default music directory (usually /Audio or /Music). If the directory exists, Pocket Tunes opens it and displays all available audio files. If it does not exist, Pocket Tunes displays the root directory of the flash card.

To select or unselect a song, tap on it. After selecting the songs to play or add, tap **OK**. To select all songs in the current directory, tap **Select All** and then tap **OK**.

Subdirectories appear with a folder icon next to them. To view the contents of a subdirectory, tap on it. A special folder called "." appears in all subdirectories. Tap on this folder to view the contents of the parent directory.

Play Lists

Pocket Tunes allows you to create and manage play lists (groups of songs to play together).

Tap on the **Play List** button to bring up the "Select a Playlist" screen. **Tip:** You can also double-click the select button on the 5-way navigator to bring up the play list.



Tap **New** to create a new playlist, **Edit** to edit an existing playlist, **Select** to select the play list and begin playing it, or **Cancel** to cancel selection of a play list. You can also tap **Delete** to delete the currently-selected playlist, or **Move** to move the playlist between main memory and an expansion card.

By default, new playlists are saved on an expansion card, if possible. If you select music from more than one expansion card, or if you select music stored in internal memory, then the playlist gets stored in internal memory on your Palm device.

When playlists are stored on an expansion card, they are stored in the standard M3U format in the /PALM/Programs/PocketTunes folder. You can copy M3U playlists anywhere on an expansion card, but it is recommended that you store them in /PALM/Programs/PocketTunes or in the same folder as the music that it refers to. (If the pathnames in the M3U file are incorrect, Pocket Tunes makes an effort to search for the music to which the playlist refers, but it might fail to find the music unless the M3U file is in the same directory as the song files.)

When you edit a play list, you see the "Edit Playlist" screen.



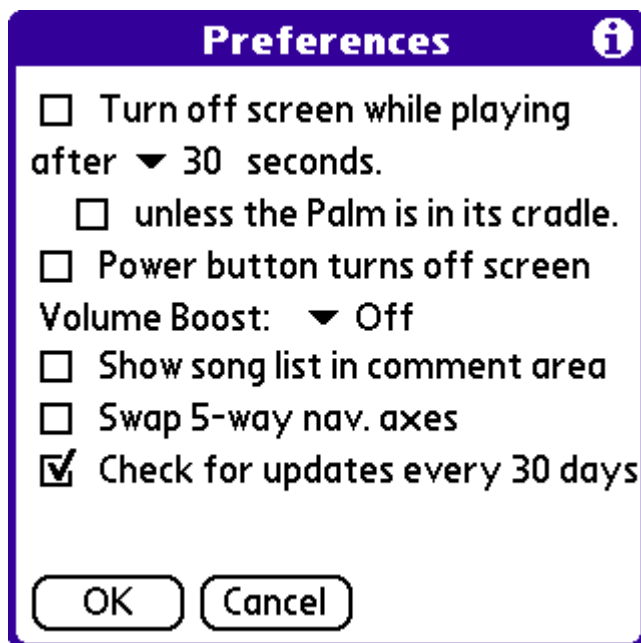
Tap **Add Song** to add a new song to the list. Tap **Remove** to remove the selected song from the list. Tap **Up** or **Down** to re-order the list.

When finished making changes to the list, tap **Save List** to save it and return to the "Select a Playlist" screen.

To delete the entire list, tap **Delete List**.

Preferences

Tap on the title bar of the skin or on the menu icon (the lower-left icon on the silk screen area of your Palm) to bring up the Pocket Tunes menu. Select **General Preferences...** to display the preferences screen.



Check the **Turn off screen while playing** option to allow Pocket Tunes to turn off your LCD display in order to save power. Turning off your display noticeably increases the battery life of your Palm while playing audio files.

Select 10, 30, or 60 seconds to determine how long Pocket Tunes waits before shutting off the display.

Select **unless the Palm is in its cradle** to leave the Palm on while playing a song while in the cradle (or charging).

Select **Power button turns off screen** to use the power button to turn off the screen while playing music.

To enable the **Volume Boost**, select the amount of boost you want from the dropdown. Note that any amount of volume boost is likely to degrade the audio quality, especially anything over +6dB. When using volume boost, set your volume to the maximum (or near the maximum). If you don't, then lower the volume boost and increase the volume slider to increase audio quality and maintain the same volume. **Performance Note:** The volume boost setting does not add any extra overhead to Ogg Vorbis or MP3 decoding, but it might slightly slow down WAV files. This slowdown should not be noticeable.

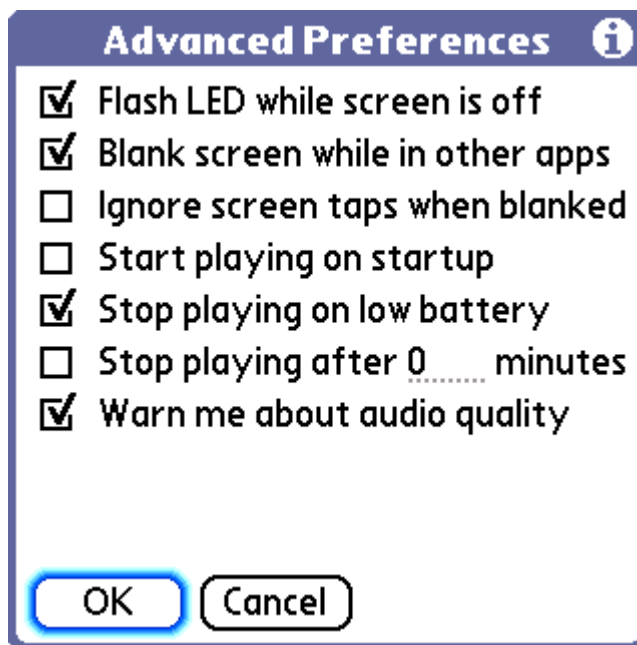
To display your current song list in the comments area on the main screen, select the **Show song list in comment area** option to scroll through all of the songs in the current playlist. Tap on them to start playing them. Note that if your skin does not have a comments area, then this option has no effect.

When **Swap 5-way nav. axes** is unchecked (default), up/down changes the volume, and left/right changes tracks. When checked, up/down changes tracks, and left/right changes the volume. This preference applies only to devices with a 5-way navigator.

Select **Check for updates every 30 days** to have Pocket Tunes remind you to check for program updates every 30 days. You can check for updates only if you have a network connection available from your Palm (for example, WiFi, Bluetooth, or cellular data network).

Advanced Preferences

Pocket Tunes has several advanced settings you can modify. To access the advanced preferences, select **Advanced Preferences** from the "Prefs" menu.



By default, Pocket Tunes flashes the LED indicator on your Palm while the screen is off, so that you know it is doing something. You can turn this off by unchecking the **Flash LED while screen is off** option.

Select the **Blank screen while in other apps** option to allow the LCD to turn off while you are playing music in the background. Uncheck this option if you do not want the screen to be turned off while working in another application.

Select **Ignore screen taps when blanked** to ignore pen taps on the screen while the LCD is turned off.

Select the **Start playing on startup** option to have Pocket Tunes automatically start playing the last song you were listening to when it is started.

By default, Pocket Tunes pauses playback when you get a low battery warning, which allows your Palm to go to sleep and prevents it from running out of battery life. You can turn this option off by unchecking the **Stop playing on low battery** option.

Select **Stop playing after X minutes** to limit the amount of time that Pocket Tunes plays music. After this time limit is reached, Pocket Tunes pauses the current song, and then the Palm goes to sleep as normal.

Select **Warn me about audio quality** to enable a warning message to appear whenever you select an option that could adversely affect the audio quality.

Skins

NOTE: Before you can use the Skin feature with the grūvi version of Pocket Tunes, you must register at www.pocket-tunes.com/sandisk to receive your free bonus code.

Pocket Tunes comes with support for "skins." A skin is an alternate graphical interface for Pocket Tunes. Visit <http://www.pocket-tunes.com/skins/> to view a list of available skins. If you're interested in making your own skins, there is information at that web site to help you.

To install a skin, double-click on its PDB file and perform a HotSync. Skins can also be installed on the flash card. To do this using HotSync, double-click on the skin and then use the Palm Install tool to change the destination to your flash card. If you are using a card reader, copy the skin's PDB file to the /PALM/Launcher directory on the flash card. You can also copy skin files to /PALM/Programs/PocketTunes (you might have to create this directory).

Next, run Pocket Tunes. Tap on the menu icon (the lower-left icon on the silk screen area of your Palm) and select **Choose Skin...** from the Tools menu.

A list of available skins is displayed.



Tap on the skin that you would like to use and tap **OK**. To delete a skin, tap on the skin and then tap **Delete**.

To copy a skin between main memory and your expansion card, tap **Copy**. (You cannot copy the Built-In Skin.)

Skin Preferences

The "Skin Preferences" screen allows you to pick two "Custom Fonts." These fonts are displayed in different places, depending on the current skin selected. By default, "Custom Font #1" is used for the title, and "Custom Font #2" is used for the song information.

On the "Skin Preferences" screen, you can also select **Show song duration in playlist**. This option is on by default and allows you to see the duration of each song, when the playlist is displayed using your active skin.

Background Playback

Pocket Tunes continues to play music even when you switch to another application. This is called background playback.

You can enable or disable background playback from the Background Preferences screen (see below).

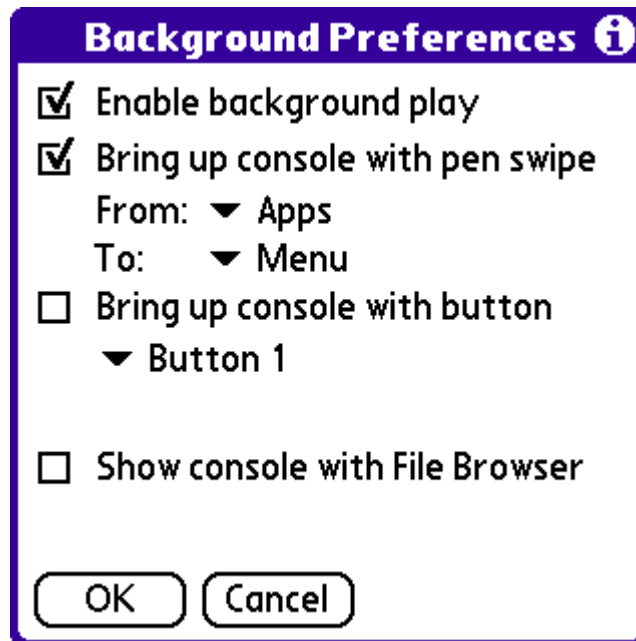
While Pocket Tunes is playing music in the background, you can bring up the Pocket Tunes console to control the playback of your music. By default, this is done by making a pen "swipe" with your stylus. While Pocket Tunes is playing in the background, put your stylus down on the "Apps" icon (to the left of the graffiti area), and drag it down to the "Menu" icon. Then lift your stylus, and the Pocket Tunes console appears.



The controls in the console window are similar to the controls in Pocket Tunes. You can switch songs, play, pause, or change the volume.

If you tap on **Open Pocket Tunes**, the Pocket Tunes application is launched. You can also type the letter 'O' to open Pocket Tunes. Tap on **OK** (or press the space bar on devices that have a keyboard) to dismiss the console.

To change the pen swipe used to bring up the console, select **Background Preferences...** from the Pocket Tunes menu.



From this dialog, you can enable background play and also enable or disable the pen swipe or button press activation for the console. You can also configure the specific pen swipe or button that brings up the Pocket Tunes console.

On Tapwave Zodiac devices, you also see **Enable action buttons in backgr.** When checked, you are able to use the action buttons (4 buttons on the right side of the Tapwave) to control the volume and skip tracks while in other applications.

On Treo 600 devices, you also see **Enable Treo 600 volume buttons.** When checked, you are able to use the ringer volume buttons to control the volume of Pocket Tunes while music is playing. When music is stopped or paused, those buttons control the ringer and phone volume.

Select **Show console with File Browser** if you want Pocket Tunes to display the popup console automatically when you tap on a song from the "Files" application (available on some devices, such as the Tungsten T5).

Getting Help with Pocket Tunes Features

For more detailed information about Pocket Tunes features or if you are having a problem, the following sites might be helpful:

- The online user guide for the core version of Pocket Tunes is available at: <http://www.pocket-tunes.com/pockettunes/docs/readme.html>.
- <http://www.normsoft.com/kb/> - the NormSoft Knowledge Base
- <http://groups.yahoo.com/group/pockettunes/> - Forum of active users